

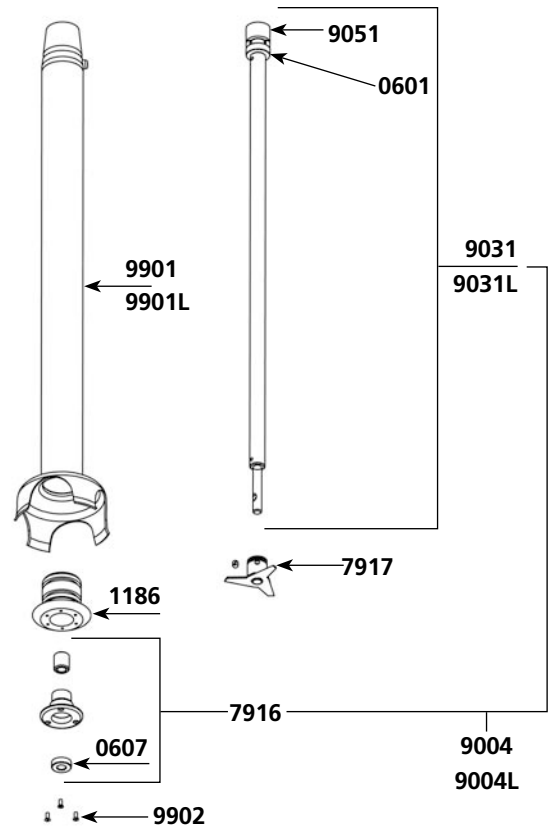
Parts list

Code

Carbon brushes (2)	0504
Ball bearing	0601
Squeezing washer	0726
Safety button, return spring	0768
Strain relief 230 V	0950
Strain relief 230 V	0950.1
Filter C.E.M. 230 V	0999.20
Warning label	1017
Dynamic label	1021
ID label 230 V	1069
ID label 115 V	1070
Micro switch	1237
Power on indicator light 230 V	1241
Power on indicator light 115 V	1241.1
Control lever	2001
Control lever protector	2002
Circuit board 230 V (4 switches + capacitor)	2003
Circuit board 115 V (4 switches + capacitor)	2003.1
Upper half handle (button side)	2004
Upper half handle (label side)	2005
Motor housing + carbon brush holders	2006
Stator 230 V (carter + carbon brush holders)	2011
Stator 115 V (carter + carbon brush holders)	2011.1
Power cord 230 V > 2002	2012
Power cord 115 V > 2002	2012.1
Power cord (English) > 2002	2012.2
Power cord (Australian) > 2002	2012.3
Lower aluminum housing	2020
Variable speed knob	2021
Complete handle 230 V	2022
Complete handle 115 V	2022.1
Variable speed circuit board 230 V	2023
Variable speed circuit board 115 V	2023.1
Safety plug	45710
Brace screws (4)	7903
Fan	7933
Rotor 115 V	9008.11
Rotor 230 V	9008.12
Power cord 230 V < 2002	9011
Handle screws (4)	9014
Field brace screws (2)	9023
Motor ball bearing sleeve	9025
Braces (4)	9026
Rotor coupler	9028
Power cord 115 V < 2002	9040
Carbon brush wires 230 V	9043
Power cord (Australian) < 2002	9066
Power cord (English) < 2002	9067
Carbon brush wires 115 V	9143
BM 2000 motor block (see machine catalogue)	AC001

MF 90/2000 & MFAP 90/2000 mixer tool

Parts list	Code
Ball bearing	0601
Waterproof seal	0607
Bearing holder + seal	1186
Emulsifying blade	7910
Lower bearing assembly	7916
Cutter blade w/ screw	7917
Lower bearing screws (3)	7950
Shaft, lower bearing & cutter assembly	9004
Shaft	9031
Coupling casing + pin	9051
Tube assembly	9901
Lower bearing screws (3)	9902
M 90 Complete Mixer tool (see machine catalogue)	AC002

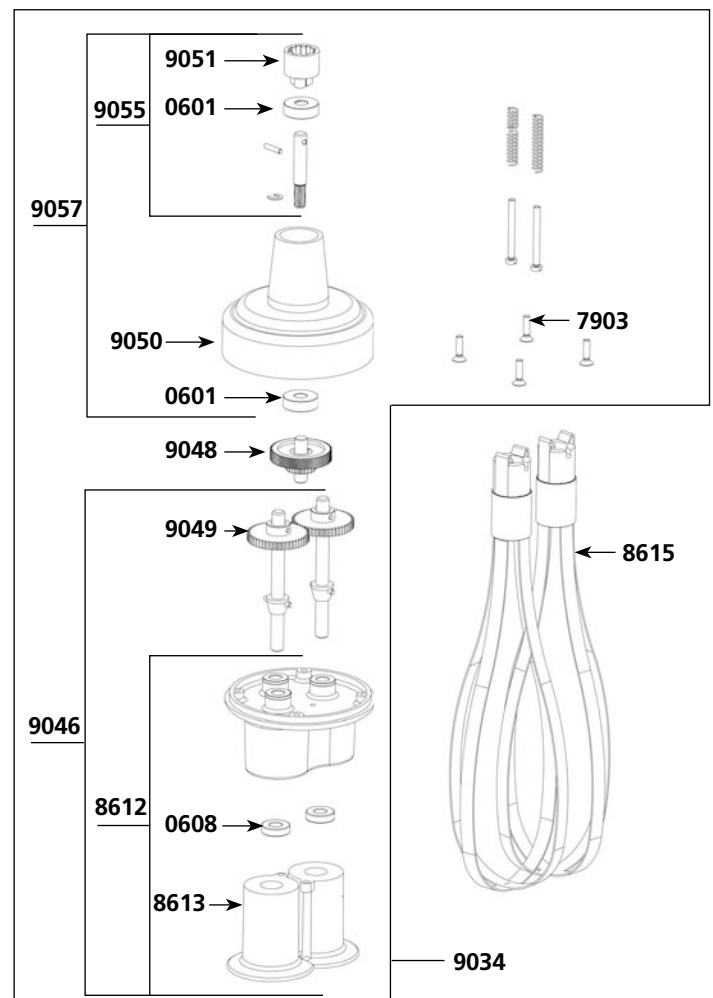


M500 mixer tool

Parts list	Code
Shaft, lower bearing & cutter assembly	9004L
Shaft	9031L
Tube assembly	9901L

MF 90/2000 & MFAP 90/2000 whisk tool

Parts list	Code
Ball bearing	0601
Waterproof seal	0608
Pin 3 X 20	0744
Pin 3 X 14	0745
Brace screws (4)	7903
Holder + plastic ejector + seal	8612
Plastic ejector (pair)	8613
Whisk (Pair)	8615
Reduction gear assembly	9034
Lower casing w/ o middle gear	9046
Central double gear & shaft	9048
Single gear (2)	9049
Upper plastic casing	9050
Coupling casing + pin	9051
Equipped upper shaft	9055
Complete upper casing	9057
F 90 Complete whisk tool (see machine catalogue)	AC003



Wall bracket

Parts list	Code
Wall bracket	0880